

Department of Animal Production & Health.

1. History and Background

Eastern Province is an agricultural province and agriculture, livestock and fisheries has been the primary economic activity for centuries and remained so even during the conflict years. Approximately 70% of the population is dependent on agriculture and livestock for their livelihoods. Livestock sector represents one way of accomplishing several national goals such as employment creation, poverty reduction and eradication of malnutrition. Further it serves as a potent medium for empowerment of women and youth.

Department of Animal Production and Health is responsible for provision of veterinary services to livestock farmer community of the Eastern Province. It functions under the Provincial Director who is based in Trincomalee. District Veterinary Surgeons are responsible for coordination of all livestock development activities in their respective districts. Veterinary services are provided through a network of 36 veterinary offices, 2 training centers and a livestock breeder farm located throughout the province under the guidance of Range Veterinary Surgeons and auxiliary staff.

1.1: Vision

Contribute to reach Excellency of social welfare in the Eastern Province through Livestock production

1.2 : Mission

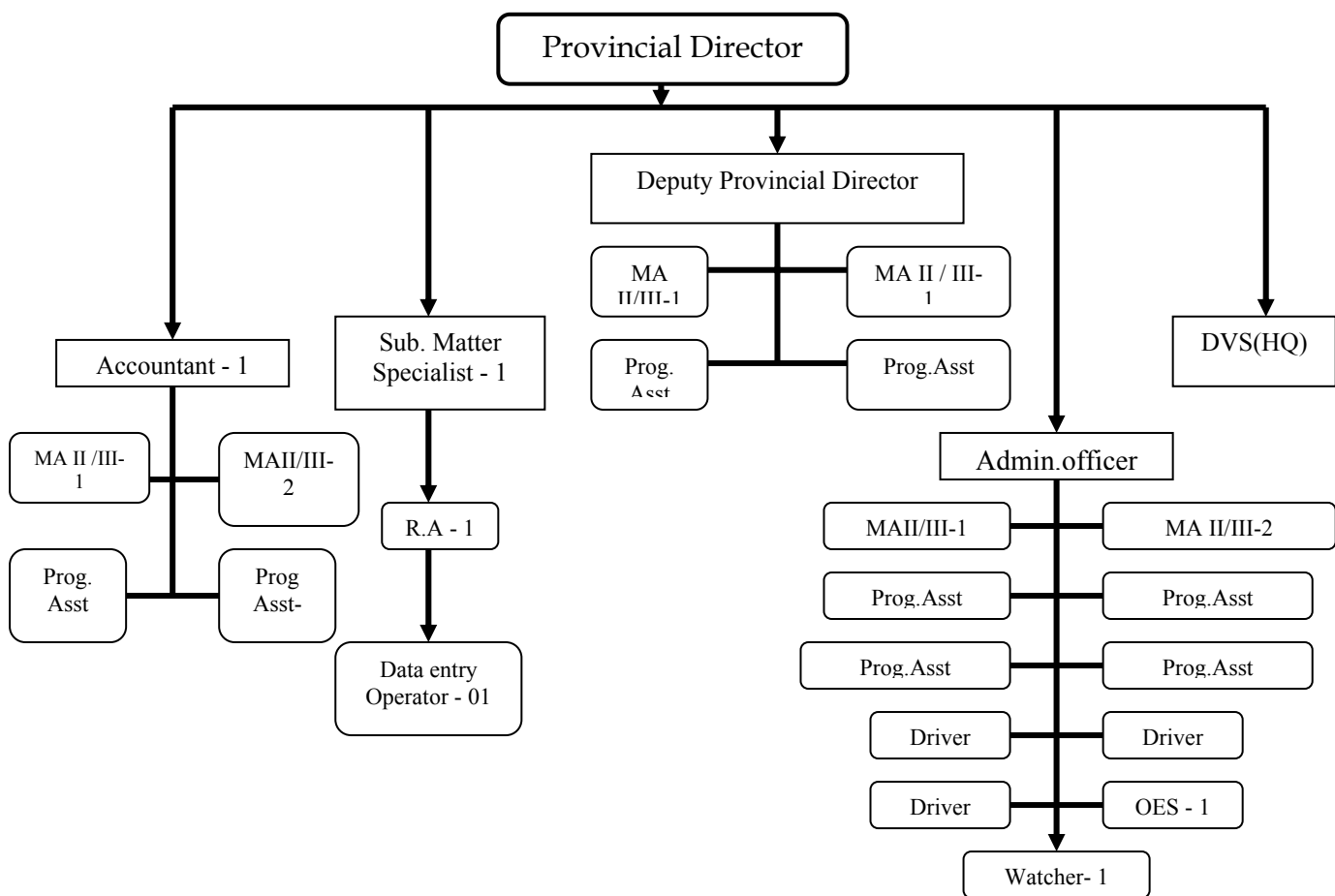
Promote modernized, commercialized animal husbandry methods to reach and sustain livestock production.

2 Human Resource:

Cadre Categories	Cadre Requirement	Cadre Approved	Present Strength	Cadre Vacancies
All Island Service				
PD/AP&H(EP)	1	1	1	0
DPD/AP&H(EP)	1	1	0	1
DVS/AP&H(EP)	4	4	3	1
Subject matter wise Specialist	1	1	0	1
Veterinary Surgeons	47	50	30	20
Livestock Officer	7	3	0	3
Special Posts				
Accountant	1	1	0	1
Programme Assistance	50	53	17	36
Middle Level Services				
LDII	75	75	71	4
Research Asst.	3	1	0	1
Combined Services				
Administration Officer/Supra	1	1	0	1
Management Assistant - I	1	2	1	1
Management Assistant -Ii, Iii	15	12	9	3
Data Entry Operator	1	1	0	1
Other Services				
Dispensary Labourer	19	14	12	2

Care Taker	5	2	2	0
Department Labourer	81	58	49	7
Drivers	26	21	12	9
Stud Centre Keeper	6	3	3	0
Machine Operator	2	2	2	0
Tractor Operator	3	2	2	0
Lorry Cleaner	3	2	1	1
Watcher	19	3	3	0
Sanitary Labourer	4	1	0	0
OES	4	4	3	1
Grand Total	380	318	221	94

3. Management Arrangement Chart



4. Human Resource Development

4.1. Training Programmes attended by officers:

4.1.1. Local Training

1. Twenty new private AI technicians were trained in Artificial Insemination in Livestock Farm, Pollanaruwa.
2. Refresher courses for LDOO were conducted at in Trincomalee.
3. Clerical staff and minor staff attached to Provincial headquarters developed their skill in computer training, English language
4. Most of the VSS attached with DAP&H were participated seminar series on Acts & Regulation pertaining to Animal Production & Health in Sri Lanka. organized by ICE, DAP&H, Peradeniya .

4.1.2. Foreign training

1. Dr M. A. Hathy Govt Veterinary Surgeon attached to Asst Directors Office Batticaloa participated in the awareness program (01 week Duration) with regard to control of spread of Avian Influenza held on Vietnam.
2. A Livestock Development Officer was trained in Japan on Counter part training Agriculture & Rural Development which was funded by JICA TRINCAP.

5. Management Organizational Resource

5.1 Land and buildings

Institution	Present Ownership	Available land	Building	
			Square ft occupied	Own/Rent building
Provincial Director's Office	PD/A P & H	30 Perch	30 Perch	Own
District Veterinary Surgeon/ Ampara				Rental
V.S. Office, Akkaraipattu	PD/AP&H	40 Perch	01 VS quarters	Own
	PD/AP&H			Own
V.S. Office, Amparai	PD/AP&H	3750 sq.m	2325 Sq .ft	Own
V.S. Office, Kalmunai	PD/AP&H	30 Perch	10 Perch20 Perch	Own
V.S. Office, Dehiyattakandiya	PD/A P&H	105 Perch	10 Perch	Own
V.S. Office, Pottuvil	PD/AP&H	19000 sq.ft		Own
V.S. Office, Thirukkivil	PD/AP&H	30 Perch		Own
V.S. Office, Damana				Rental
V.S. Office, Uhana				Rental
V.S. Office, Ninthavur				Rental
V.S. Office, Padiyathalawa				Rental
V.S. Office, Mahoya	PD/AP&H	10880 Sq.ft		
V.S. Office, Lahugala				Rental
V.S. Office, Irrakkamam				Rental
V.S. Office, Sammanthurai	PD/AP&H	31350 sq.ft		Own

Veterinary Investigation Centre / Ampara	PD/AP&H			Own
District Veterinary Surgeon/Batticaloa	PD/AP&H	80 Perch	1992 Sq.ft Land & Building floor space	Own
Regional Training Centre, Kallady	PD/AP&H	1Acre		Own
V.S. Office, Batticaloa	PD/AP&H			Own
V.S. Office, Chenkalady	PD/AP&H	9375 sq.ft		Own
V.S. Office, Kaluwanchikudy	PD/AP&H	60 Perch		Own
V.S.Office,Kokkadichicholai	PD/AP&H	40 Perch	1200 Sq.ft	Own
V.S. Office, Valaichchenai	PD/AP&H	40 Perch	Office & building 2430.25 Sq.ft land 162805 Sq.ft.	Own
V.S.Office,Vavunatheevu	PD/AP&H			Own
V.S.Office,Kathankudi				Rental
V.S.Office,Thumbankerney				Rental
V.S.Office,Eravur				Rental
V.S.Office,Vahari	PD/AP&H			Own
V.S.Office,Kiran				Rental
District Veterinary Surgeon/Trincomalee				Rental
V.S. Office, Kanthalai	P.D /AP&H	0.5 Acre		Own
Stud Centre, Kanthalai	PD/AP&H	04 Acres		Own
V.S. Office, Thambalagamam	PD/AP&H	1 Acres		Own
V.S. Office, Muthur	P.D/A.P&H	40 Perch		Own
V.S. Office, Morawewa		100 sq.ft		Rental
V.S. Office, Trincomalee	PD/A.P&H	30 Perch		Own
V.S. Office, Gomorangadawala				Rental
V.S. Office,Padavisiripura				Rental
V.S. Office,Kinniya				Rental
Training School, Uppuveli	PD/AP&H	05 Acres		Own
Regional Livestock Farm, Uppuveli	PD/AP&H	90 Acres		Own
Stud Centre, Nilaveli	PD/AP&H	4 acre	Land Extent 4 Acres building 20'x25'(2rooms one hall)	Own
V.S.Office, Kuchchaveli	PD/AP&H			Own
Veterinary Investigation Centre/Thambalagama	PD/AP&H			Own

5.2. Vehicles

S.No	Department/ Institution	Pick - Up	Jeep	Lorry	M.Bike	Other
1	HQ/AP&H	1		1		1 Bowzer
2	Vet.Office, Trincomalee	1			1	
3	Vet.Office, Kantalai	1			2	
4	Vet.Office, Kuchchaveli	1			1	
5	Vet.Office, Kuchchaveli	1			1	
6	Vet.Office, Morawewa		1		1	
7	Vet.Office, Kantalai				1	
8	Vet.Office, Thampalagamam	1			1	
9	RLF, Uppuveli District Veterinary					1 Van,1 Canter
10	Surgeon Batticaloa	1			1	
11	Vet.Office, Batticaloa		1		2	
12	Vet.Office, Valaichchenai		1		4	
13	Vet.Office, Chenkalady		1		1	
14	Vet.Office, Kaluwanchikudy District Veterinary		1		2	
15	Surgeon / Ampere					
16	Vet.Office, Thirukovil		1		1	
17	Vet.office, Amparai	1			1	
18	Vet.Office, Kalmunai	1			1	
19	Vet.Office, Akkaraipattu				2	
20	Vet.Office, Dehiattikandiya		1		1	
21	Sammanthurai				2	
22	Vet.Office, Potuvil				2	
23	RTC Kallady					1 Tractor

5.3) Furniture

Institution	Table		Chairs		Almyrah	
	Avail able	Requir ement	Avail able	Requir ement	Avail able	Requir ement
Provincial Director's Office	70	20	80	25	25	25
District Veterinary Surgeon/ Ampara	7	8	10	15	5	10
Range V.S. Offices in 14 Divisions of Ampara	39	43	67	118	31	44

District Veterinary Surgeon/Batticaloa	15	6	20	20	4	5
Regional Training Centre,Kallady	5	25	20	50	1	4
Range V.S. Offices in 11 Divisions of Batticaloa	16	40	21	70	15	32
District Veterinary Surgeon/Trincomalee	5	3	10	10	3	4
Regional Livestock Farm - Uppuvelly	4	5	8	10	3	4
Range V.S. Offices in 07 Divisions of Trincomalee	20	24	32	63	11	22
Total	183	176	268	381	98	150

5.4 Equipment & Machinery

Institution	Com puter	Lapt op	Photo Copier	Print er	Type writer	Teleph one	Fax	Gener ator	Refrig erator
PD Office Trincomalee District	16	1	2	6		1	2		2
DVS Office 9 Range VS Offices of Trinco RLS Farm Uppuvely	3	1	2	5		1	1		2
Batticaloa District						1			9
DVS Office 11 Range VS Offices of Batti R.T.C -Kallady	1							2	1
Amparai District									
DVS Office 14 Range VS Offices of Ampara	8	1	1	4		1	1		2
TOTAL	28	5	7	15	0	7	1	2	14

6. Programme and Activity with Development indicator

Activity	District	Source of Fund	T. E.C	Achievement	Out put
6.1. Dairy Development. 1.Establishment of Dairy Villages.	Trincomalee, Ampara,Batticaloa Districts	Line Ministry	20.5 M	44 Nos	880 cows/ heifers issued / 880 sheds constructed/ 40 Training programmes conducted
2..Establishment of Model Integrated farm.	Trincomalee	UNDP	0.15 Mn	Establishment of 03 Model Integrated farms in Trincomalee district.	20 Cows issued / 80 Goats issued / 1000 Month old backyard chicks issued
3..Establishment of Private Animal Breeder Farms	Trincomalee, Ampara, Batticaloa Districts	Line Ministry	0.24 M	03 Units	Three animal breeding units were established in Kanthalai, Kinniya and Kaluwanchikudy , 03 Superir buffalo bulls issued for each breeder farms
4.Establishment of Milk Sales Outlet.	Trincomalee and Batticaloa Districts	Line Ministry	0.2 M	02 Units	Milk sales outlet were established in Trincomalee(Kanthali) , and Batticaloa (Eravur town) districts.
6.2. Veterinary Services 1.Artifical Insemination Services.	Trincomalee, Ampere, Batticaloa Districts	Dept of AP & H	0.12 M	5500 Cows inseminated using deep frozen semen	Obtained improved calves.
2.Strengthening Facilities at Uppuveli farm.	Trincomalee,	UNDP	1.2 M	12000 chicks per month	12000 chicks being hatched daily
6.3.Infrastructure Development 1.Opening of New Veterinary Offices.	Trincomalee, Ampara, Batticaloa	Dept of AP & H	-	16 New VSs Offices opened	Improved Veterinary services and livestock extension activities
2.Renovation of Regional Training Centre, Kallady,	Batticaloa.	PSDG	0.19 M	100% Completed	03 Residential, non residential farmer trainings were conducted. 200 farmers benefited
3.Procurement of Veterinary Equipments Furniture, Strengthening of Veterinary	Trincomalee, Ampara, Batticaloa	Line Ministry	10.0 M	100% Completed	Supply of furniture, Office equipments and Veterinary equipments to range veterinary offices in all three districts.

services

6.4. Poultry Development

1.Promotion of Backyard Poultry rearing.	Trincomalee, Ampara, Batticaloa	PSDG	0.26 M	170 Units	30 Backyard poultry per units comprising 5200 backyard birds
--	---------------------------------	------	--------	-----------	--

6.5. Re-Settlement Area Activities.

1.Supply of Backyard Chicks.	Trincomalee, Batticaloa	Muslim Aid,FAO, UNDP	4.2 M	750 Families	Restoration of livelihood opportunities of 750 families
2.Salvage of Abandoned Animals.	Trincomalee, Batticaloa	Line Ministry/U NDP	3.0 M	109000 abound and animals salvaged	2400 family provided with livelihood opportunities in dairying

7. Details of Recurrent and Capital Expenditure

7.1: Capital

Source of Fund	Allocation	Expenditure
Furniture and Office Equipment	122,701.00	120,750.00
Others	129,299.00	129,299.00
Sub Total - CBG PSDG (07 work items)	252,000.00	250,049.00
Total	3,000,000.00	2,507,940.19

7.2: Recurrent Expenditure

Source of Fund	Allocation	Expenditure
Personal Emoluments	65,207,000.00	51,968,026.35
Other Expenditure	9,780,000.00	8,389,111.73
Total	74,987,000.00	60,357,138.08

8. Precautions taken by the department to prevent the spread of Bird Flu /Highly Pathogenic Avian Influenza (HPAI)

- Disposal and Depopulation team was appointed.
- Bird flu awareness programmes were conducted for Secretary, Directors, Veterinary Surgeons, Livestock Development Officers and Farmers.
- Actions have been taken to formation of Provincial and District Coordinating Committee for HPAI.
- Poultry farms were registered under UNDP.
- Mapping of Poultry production units were also done with available resources.

- Policy on backyard poultry farms was made with the assistance of all Directors, Veterinary surgeon and other staffs.
- Workshop on mapping of poultry unit was held at District level.
- HPAI Surveillance team selected. Random sample was collected from backyard poultry and send it to VRI.
- Awareness training programme to staff and poultry farmers.
- Stopped the importation of parent stock chicks

9. Achievement

The achievement during the year 2007 is given in the following table:

Activity	Up to December 2007
ISSUED BREADING MATERIALS	
Day Old Broilers	22168
Day old Pullets	3474
Day old Cock	920
Day Old Unsexed	4713
Month Old Unsexed	164478
Cattle & Heifer	194
Buffalo	05
Goats	4483
Bull calves	1029
ANIMAL HEALTH SERVICES	
Out Door Cases	19815
No. of mobile Vet Clinic conducted	154
No of farmers benefited by mobile clinics	4418
VACCINATION AGAINST POULTRY DISEASES	
a. In Poultry	900997
Ranikhet	326022
Fowl Pox	672189
Gumboro	
VACCINATION AGAINST LIVESTOCK DISEASES	
Hemorrhagic Septicemia(annual immunization prog.)	205870
Black Quarter(reported in Mahaoya)	16919
Foot and Mouth(reported in Valaichchanai&Uhana)	47350
ARTIFICIAL INSEMINATION	
Cattle	5594
Goat	228
Pregnancy Diagnosis done	2872
Calving	1986
Kidding	44
NATURAL BREADING	
Stud Service - Cattle	317
Stud Service - Goat	97
Pregnancy Diagnosis	877
Calving	273
Kidding	42
Castration	3739

PASTURE & FODDER DEVELOPMENT

Pasture established(Acres) 212.5

TRAINING

No.of Programmes conducted 789

Number of Farmers attended. 17292

Farmers trained at Kallady Training Centre 338

Milk Collection - litters 8361037

Post Mortem Examination 7859

10.Projects funded by Line Ministry:

10.1: Dairy Villages

With the funding received from the Ministry of Livestock Development three model Dairy villages were established at Thuraineelawanai, MahaOya and Thampalakamam Divisional Secretary Divisions in the Eastern Province. Beneficiaries were provided with a dairy cow through the project while beneficiary was requested to construct cattle sheds.

In addition, Under “Nagenahira Nawodhaya” Programme a total of 60 Dairy villages were established in the Eastern Province out of which 41 was established by the Department of Animal Production & Health while the balance 19 was established by the MILCO.

District	No. of Dairy villages in a VS Range	No of beneficiaries
Ampara	12	240
Batticaloa	19	380
Trincomalee	10	200

10.2: Exhibition:

Department has actively participated in the “Deyata kirula” exhibition. Livestock exhibitions were held at Kuchchaveli, Kinniya, Morawewa, in Trincomalee district and Kaluwanchikudi, Koralipatthu North, Koralipatthu West, in Batticaloa District Mahoya, Lahugala in Ampara District.

Mobile services were conducted successfully in Ampara, Batticaloa and Trincomalee and large number of livestock farmers benefited. Main problem forwarded by livestock farmers are loss of livestock due to civil conflict

10-3: Opening of new Veterinary Surgeon’s Office and Quarters

16 new Veterinary Surgeons ranges were created in 2007 except Morawewa 13 offices functioning at temporary buildings. Vaharai Veterinary office construction works and Vavunatheevu office building works in progress.

Veterinary Quarters and Building at Morawewa were completed. Construction works for new Veterinary Surgeons office and Quarters at Pottuvil in progress.

11.Problems and constraints :

11.1: Problems related to Livestock sector development:

- 1) Shortage of Veterinary Surgeons and low coverage of animal health and disease surveillance activities.
 - 2) The Field Veterinary Surgeons and Extension Officers find difficulties to carry out field work due to lack of transport facilities, Motor cycles, Vehicles and in adequate fuel allocations.
 - 3) Inadequate no of A.I trained LDOO leads to low Artificial insemination coverage.
 - 4) Lack of infrastructure facilities, most of the newly opened VSs offices are functioning at temporary buildings.
 - 5) Ethnic conflict and tight security measures affect the Artificial Insemination coverage.
 - 6) Inadequate allocations for livestock extension works and trainings.
 - 7) Poor participation of private sector, In large scale Dairy Industry
 - 8) Lack of superior breeding materials.
- Low farm gate prices for livestock products and poor integration

11.2 : Constraints

- Loss of productive livestock due to conflict
- Non availability of quality breeding materials
- High labour costs.
- Low farm gate price for milk
- Non participation of private sector
- Scarcity of quality breeding materials
- Consistent increase in feed costs
- High cost of day old chicks
- High incidences of contagious poultry disease and low vaccine coverage
- Lack of Mobility to Veterinary Surgeons and LDOO in many ranges.
- Vacant carder position especially Veterinary Surgeon and Livestock Development officers.
- Poor linkages between the livestock farmers and other service providers.