

Department of Building

1. History and Background

The Buildings Department of North East Province was established in 1989. The name of the Construction Department has been now changed to Buildings Department to the original position with effect from 01.10.1999 with the approval of the Honorable Governor, North East Province. The NEP was de-merged as the Eastern Province and the Northern Province. There are there (03) District Offices and three (03) Regional Offices are functioning in each District under the administration of Chief Engineers and Executive Engineers respectively.

1.1. Vision

To ensure the infrastructure Developments to cater the future demand of Humans growth in better ways and means; to suit the conditions and Situations in future.

1.2. Mission

To construct, reconstruct and maintain buildings to the satisfaction of the state organizations in EP and to fulfill the aspiration of the people.

1.3. Objectives

1. Public buildings constructed and reconstructed.
2. Public buildings maintained.
3. Designs for state agencies provided.
4. Maintaining proper administration.

2. Functions

- 1 Implementation of Policy decision, control & Co-ordinate the Programme of Works assigned to the Department by the Ministries and other Departments of the E.P. and the Central Government
2. Implementation, Planning, Designing, Estimating, Construction and maintenance and providing Consultancy Services
3. Formulation of Building Construction Programme for the Public Sector.
4. Securing building materials for construction industry.

3. Major Thrust Areas for Development - 2007

1. Improvement of the Infrastructures.
2. Human Resources Development.
3. Enhancing the Technical Knowledge of the Contractors.
4. Improving the Contract Management system.
5. Promoting the usage of Local resources.

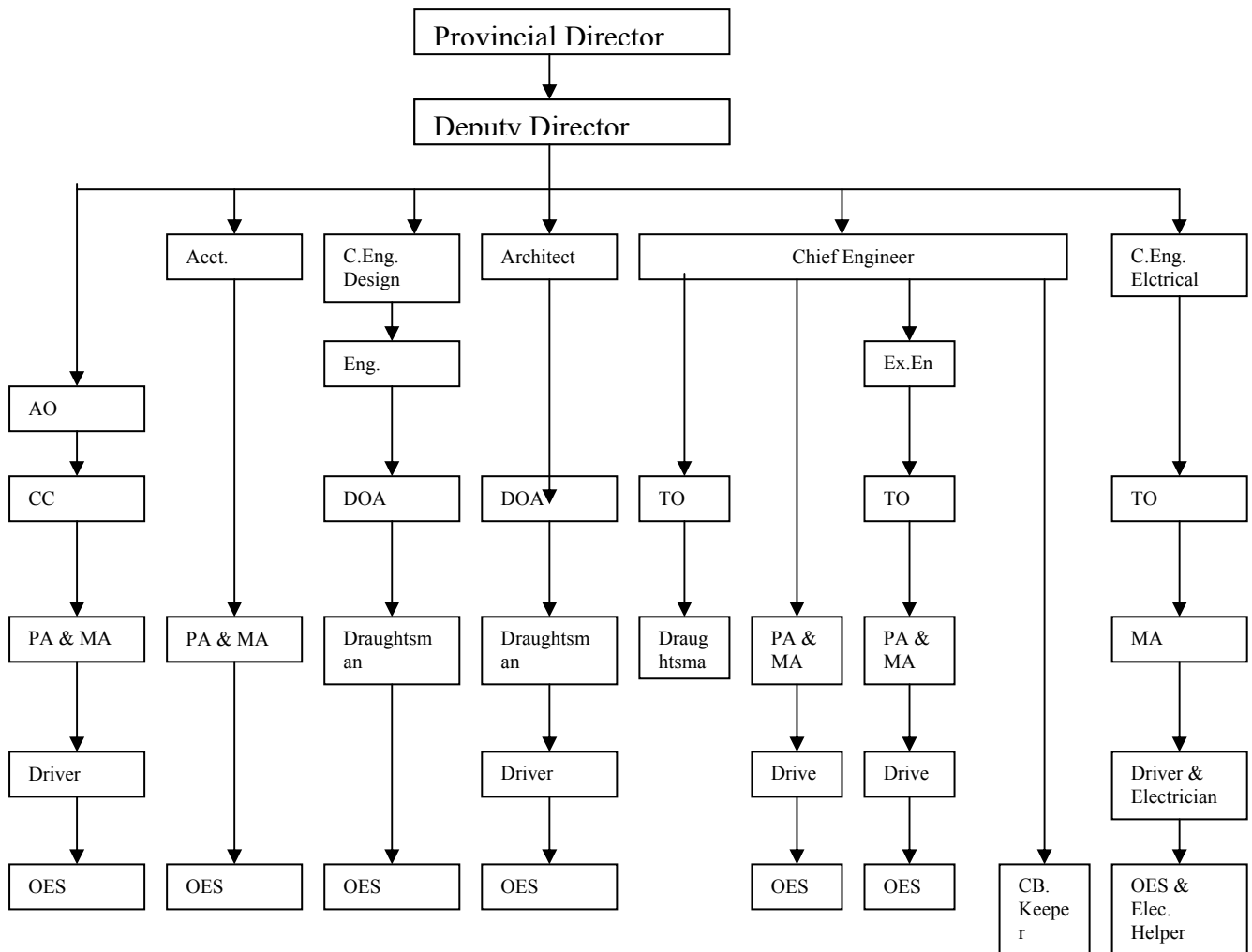
4. Human Resource

Service	Grade	Class & Grade	Approved Cadre	Present Strength	Addition al Requirement	Total Carder Requirements
Provincial Director	S.L.E.S	Class I	1	1	0	1
Deputy Director	S.L.E.S	Class II	1	0	0	1
Chief Engineer Head office	S.L.E.S	Class III	1	0	0	1
Engineer	S.L.E.S	Class III	6	6	3	9
Architect	S.L.Ac ht.S	Class III	1	1	0	1
Accountant	S.L.Ac s.S.		1	1	0	1
Quantity Surveyor	Quant. Survey.	Class III	1	0	0	1
Admin. Officer	MAS	Supra	1	0	0	1
Development Assistant	Dev.As st	Grade III	1	0	0	1
Programme Assistant		Grade III	22	16	0	22
Management Assistant	MAS I	Class I	2	3	2	4
Management Assistant	MAS II, III	Class II& III	20	26	7	27
Draughtsman	S.L.T.S	Grade III	6	5	2	8
Technical Officer	S.L.T.S	Grade III	32	32	8	40
Driver	Drivers Services	Grade III	10	8	0	10
Office Employees	OES	Grade I,II&III	7	12	7	14
Watcher	OES	Grade I	6	6	2	8
Circuit Bungalow Keeper	OES	III	0	0	2	2
Skilled workers	OES	Grade I,II&III	42	40	0	42
Total			161	157	33	194

4.1 : Trainings.

Local training opportunity was provided to the officers of this department under regular programmes of MDTD such as Auto Cad, CIGAS & Pay roll and PD and other senior Engineers usually attending trainings/seminars at Institute of Construction Training & Development Colombo.PD attended a day seminar on "Adjudication Construction Disputes under ICTAD and FIDIC" .

5. Management Arrangement Chart



6. Management Organizational Resource

6.1 Land & Building

Name of Land /Building	Date of purchase / construction	Present Ownership	Total extent / Total length area (Sq.ft) available	Total Extent in use (Sq.ft)	Date of last repairs made
Chief Engineer's Office, Kalmunai	2001	Director, Buildings, N.E.P	6,806.25 Sq.ft	6,806.25 Sq.ft	-
Executive Engineer's Office, Kalmunai.	1989	Director, Buildings, N.E.P	19,874.25 Sq.ft	19,874.25 Sq.ft	-
Chief Engineer's Office, Executive Engineer's Office, Circuit Bungalow, Stores, Chief Engineer's Qrs., Executive Engineer's Qrs. Batticaloa.	-	Director, Buildings, N.E.P	209,152 Sq.ft	209,152 Sq.ft	-
Staff Qrs. (5 Nos) Navalady Road, Kallady	-	Director, Buildings, N.E.P	62,478.57 Sq.ft	62,478.57 Sq.ft	Repairs work is in progress now
Chief Engineer's Office, Executive Engineer's Office, Director's Office, Design Office, Architect Branch, Conference Hall, Common Area, Trincomalee	1989	Director, Buildings, N.E.P	26,048.44 Sq.ft	17,150 Sq.ft	-

6.2. Vehicle

Institutions	Pick-up	Jeep	Three wheeler	Bicycle	Other
Director's Office	1	1	1	-	-
Chief Engineering Office Ampara	1	-	-	1	-
Chief Engineering Office Trincomalee	1	-	-	1	-
Executive Engineering Office Trincomalee	1	-	-	1	-
Chief Engineering Office Batticaloa	1	-	-	1	-
Executive Engineering Office Batticaloa	1	-	1	1	Land Rover 1
Executive Engineering Office Kalmunai	1	1 (Not in use)	-	-	-

6.3 Furniture

Institutions	Table Available	Table Requirement	Chairs Available	Chairs Requirement	Almarah Available	Almarah Requirement	Others Available	Others Requirement
Executive Engineering Office Kalmuai	16	5	12	9	Large 1 Small 5	3	6 Filing cabinet	computer Table 1 Chair 1
Chief Engineering Office Ampara	10	3	10	5	7	1	2 Filing Cabinet	1 File Cabinet
Director's Office	27	-	50	-	39	-	11 Filing cabinet	-
Chief Engineering Office Trincomalee	10	6	22	5	10	3	8 Filing cabinet	3 Filing cabinet
Executive Engineering Office Trincomalee	20	5	13	5	9	4	-	2 Filing Cabinet 1 File Track
Chief Engineering Office Batticaloa	19	1	15	10	9	2	3 Filling cabinet	2 Filing cabinet
Executive Engineering Office Batticaloa	30	3	20	8	14	-	7 Filing cabinet	-

6.4 Equipment & Machinery

Institutions	Computer	Photo Copier	Printer/Roneo	Typewriter	Telephone	Fax	Generator	Any Other
Chief Engineering Office Ampara	1	1	1Printer,	1	1	1	-	-
Chief Engineering Office Batticaloa	1	1	1 Printer 1 Roneo	2	2	2	1	-
Chief Engineering Office Trincomalee	2	1	2Printer	2	1	-	-	-
Director's Office	19	5	15 Printer, 1 Roneo	2	6	2	2	Plan printer 1, Plotter 1, CD writer 1, Multi Media Projector 1, Scanner 1, Digital 1
Executive Engineering Office Batticaloa	2	2	2Printer, 1Roneo	3	2	1	1	-
Executive Engineering Office Kalmunai	1	1	1 Printer	-	1	-	-	-

Institutions	Computer	Photo Copier	Printer/ Roneo	Typewriter	Telephone	Fax	Generator	Any Other
Executive Engineering Office Trincomalee	3	1	3 Printer 1 Roneo	2	2	-	-	-

7. Programme and Activities with Development Indicator

(a) Capital

Source of Fund	Amount Allocated	Amount Released	Amount Spent	Percentage on released funds
PSDG	0.00	0.00	0.00	0
CBG	252,000.00	252,000.00	251,655.00	99.86 %
Any Other	0.00	0.00	0.00	0.00
IRDP	0.00	0.00	0.00	0.00

(a) Recurrent Expenditure

Recurrent Expenditure	Amount Allocated	Amount Released	Amount Spent	Percentage on released funds
Personal Emoluments	36,778,000.00	36,778,000.00	36,152,828.70	98.30 %
Other Expenditure	4,041,000.00	4,041,000.00	5,198,482.81	128.64 %

8. Achievement

A. Completion of the Ministry of Agriculture Building Complex at Varothayanagar on direct labour was one of challenge and great achievement. This building complex was completed within the time frame and the NPC is in occupation.

B. The efficient services rendered by this Department to the Client Departments in Designing, Construction of new buildings, Rehabilitation, Reconstruction and Renovation of damaged buildings to their entire satisfaction are special achievements.

C. The Asian Development Bank and the World Bank have highly appreciated and commended on the performance of this Department and on the quality of the buildings constructed under the NECORD and NEIAP II.

D. The Department of Buildings through its 3 district offices and 3 Regional offices has during the year 2007 successfully executed 144 construction activities to the tune of Rs. 231.932 Mn.

Details of construction works undertaken for the central institutions and for the provincial institutions are shown in the following table.

Construction of Building Institutional	No. of Works	Estimated Cost Rs.Mn	Expenditure Rs.Mn	No. of Works Completed
Provincial Public Admin.	11	10.366	10.366	11
Telecom work	1	0.541	0.507	1
Dept. of MDTD	3	1.792	1.792	1
Dept. of A.P & H	5	2.142	1.981	5
Dept. of Social Service	16	16.883	16.497	14
Ministry of Agriculture	12	50.292	48.023	11
Chief Secretary's office work	4	1.065	1.031	4
Governor's work	7	9.135	9.111	5
Commissioner of Local Govt.	1	4.500	4.474	1
Postal Department	2	0.512	0.274	2
Dept. of Industries	1	0.124	0.124	1
Dept. of Motor Traffic	2	0.398	0.352	2
HSDP/ Ministry of Health	23	30.119	30.119	16
Ministry of Health (Central)	28	76.085	71.431	23
Ministry of Defense	1	7.714	7.714	-
PSDG	2	2.441	2.441	2
Nation Buildings	15	19.604	6.376	14
Prison work	1	3.313	1.709	1
Ministry of Hindu Culture	1	0.405	0.405	1
Others	8	3.501	3.061	7
Total	144	231.932	208.788	122

9. Constraints

Shortage of engineers and technical staff, equipment and vehicle are the main constrains in this sector.